

# Special VISTA Instructions for Installing Software

May 2008 rev 1.0

## 1 Introduction

VISTA's security features prevent easy installation of our software. Our software is designed to run on operating systems ranging from Windows 95 to Windows VISTA, but it is not possible to make VISTA happy about this.

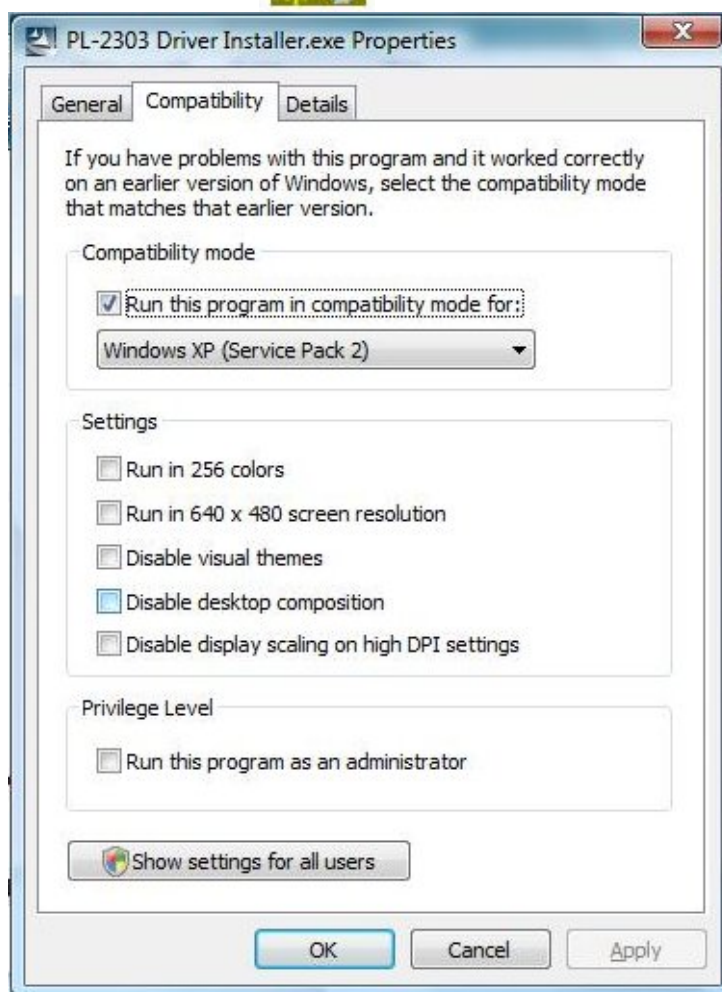
There are two options for installing under VISTA. Either option can be used. It may not be possible to use these methods if the software came on a CD or USB memory stick, in which case a local copy of the contents of the CD/USB drive must be made on the computer's local hard drive.

## 2 Method A – change properties of installation executable

1. Locate the USB, CD, or local copy of the software under the Computer Icon.
2. Find the “Install.exe” icon and right-click on it.

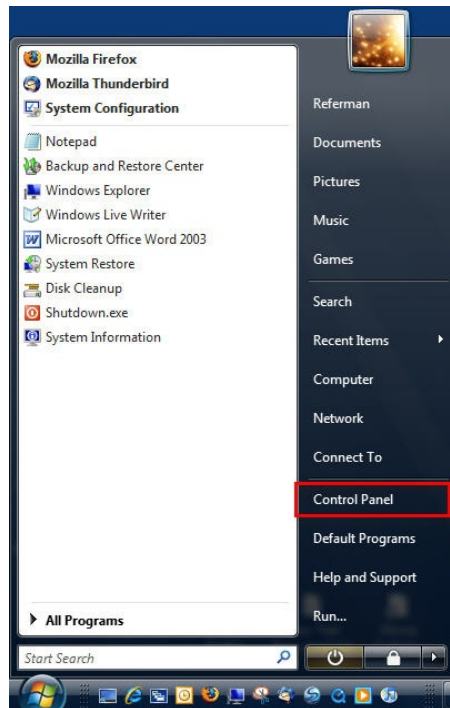


3. You will need to check **“Windows XP (Service Pack 2)”** in the Compatibility mode.
4. Click **“OK”**
5. Launch the installation program by double-clicking on the “Install.exe” icon. If the program does not run, try making a local copy of the software on your computer's hard drive and ensure that you are logged in with administrative rights.
6. Follow the software installation instructions from the manual, or as prompted on-screen.

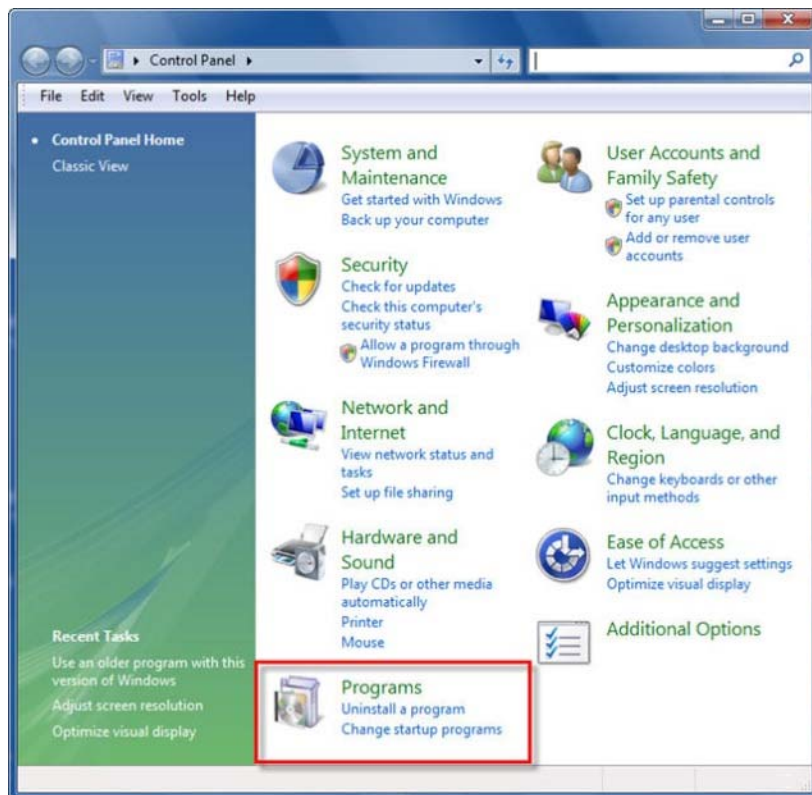


### 3 Method B – use control panel to set compatibility mode

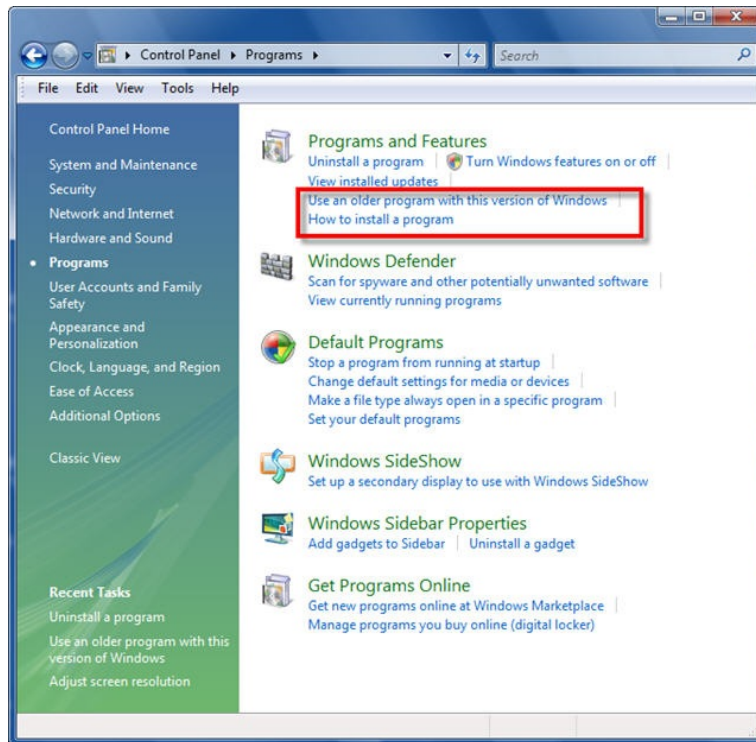
1. Click the Start Orb.
2. Select “Control Panel”.



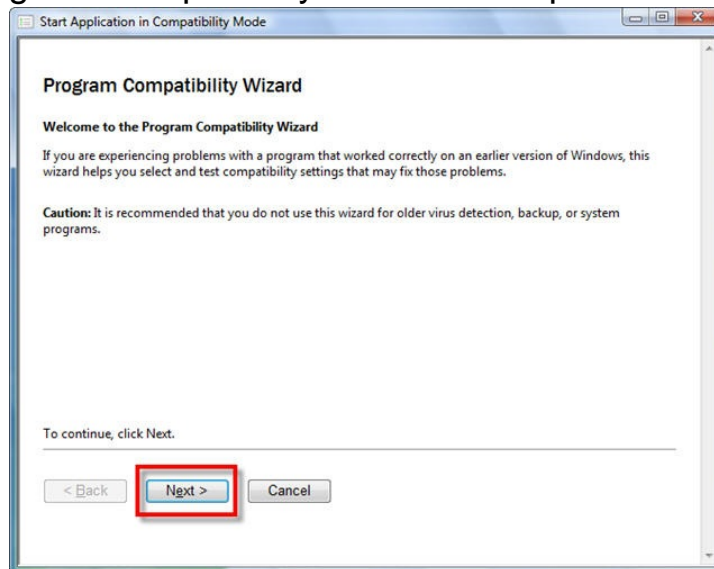
3. Click “Programs”.



4. Under “**Programs and Features**” click “**Use an older program with this version of Windows**”.



5. The “**Program Compatibility Wizard**” will open.



6. Click “**Next**”.

7. Now you can locate the program you want to use in Compatibility mode.

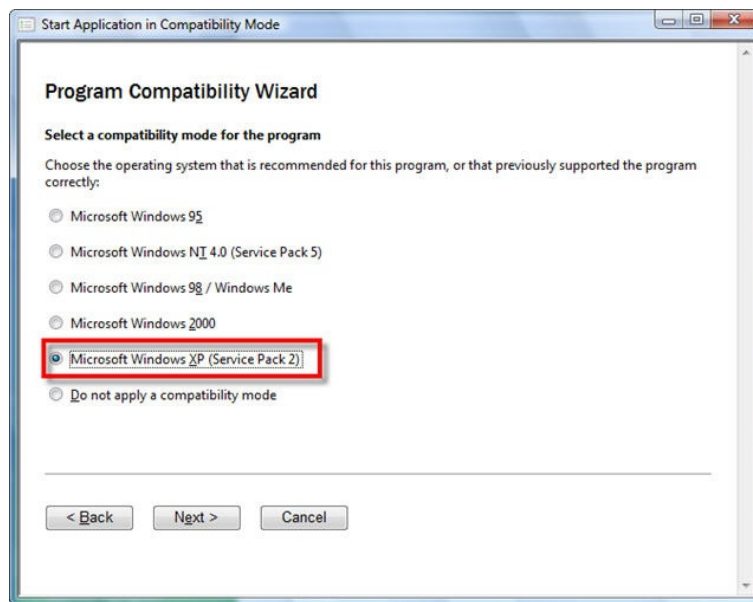
**I want to choose from a list programs .** If you choose this option Windows will scan your computer for programs to run.

**I want to use the program in the CD-ROM drive.** This is the most likely option you will choose, because most software is still sold on CD's

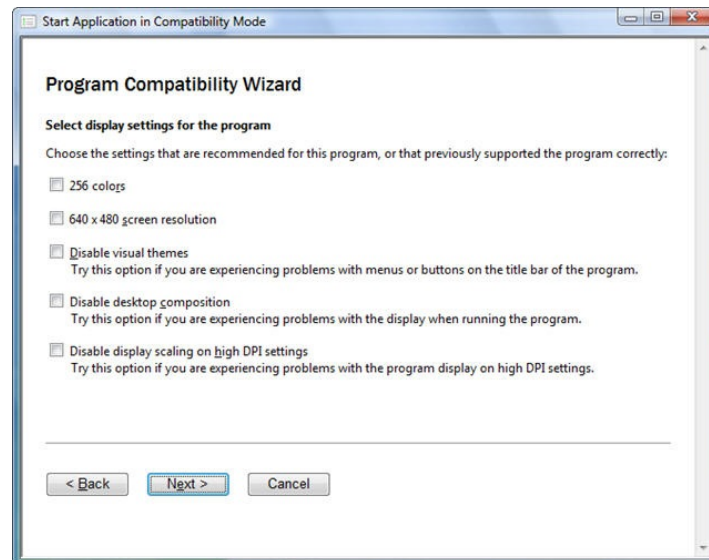
**I want to locate the program manually.** Use this option if you have the programs stored on your hard drive.

8. Choose one of the last two options (depending on whether the program is on a CD or on the local card drive)

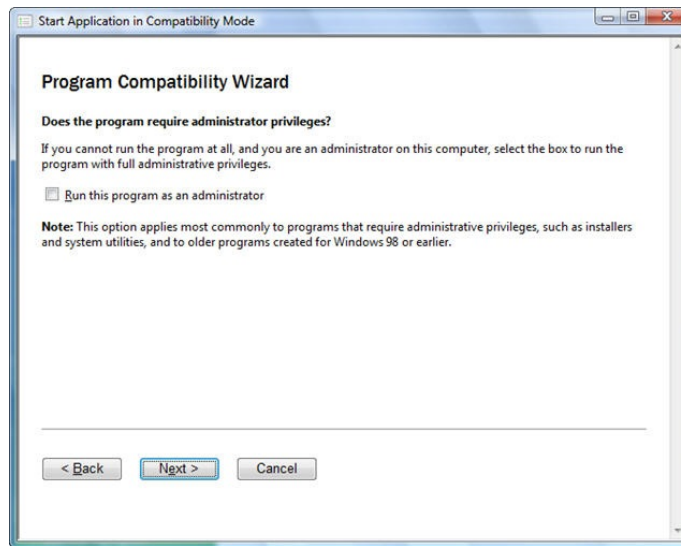
9. Select the “**XP (service Pack 2)**” option.



10. You do not need to check any display options for the installation program. Just click Next.



11. You should be logged in with administrative rights, so the question whether administrative privileges are required is moot.



12. Click "**Next**" and the installation program should run.