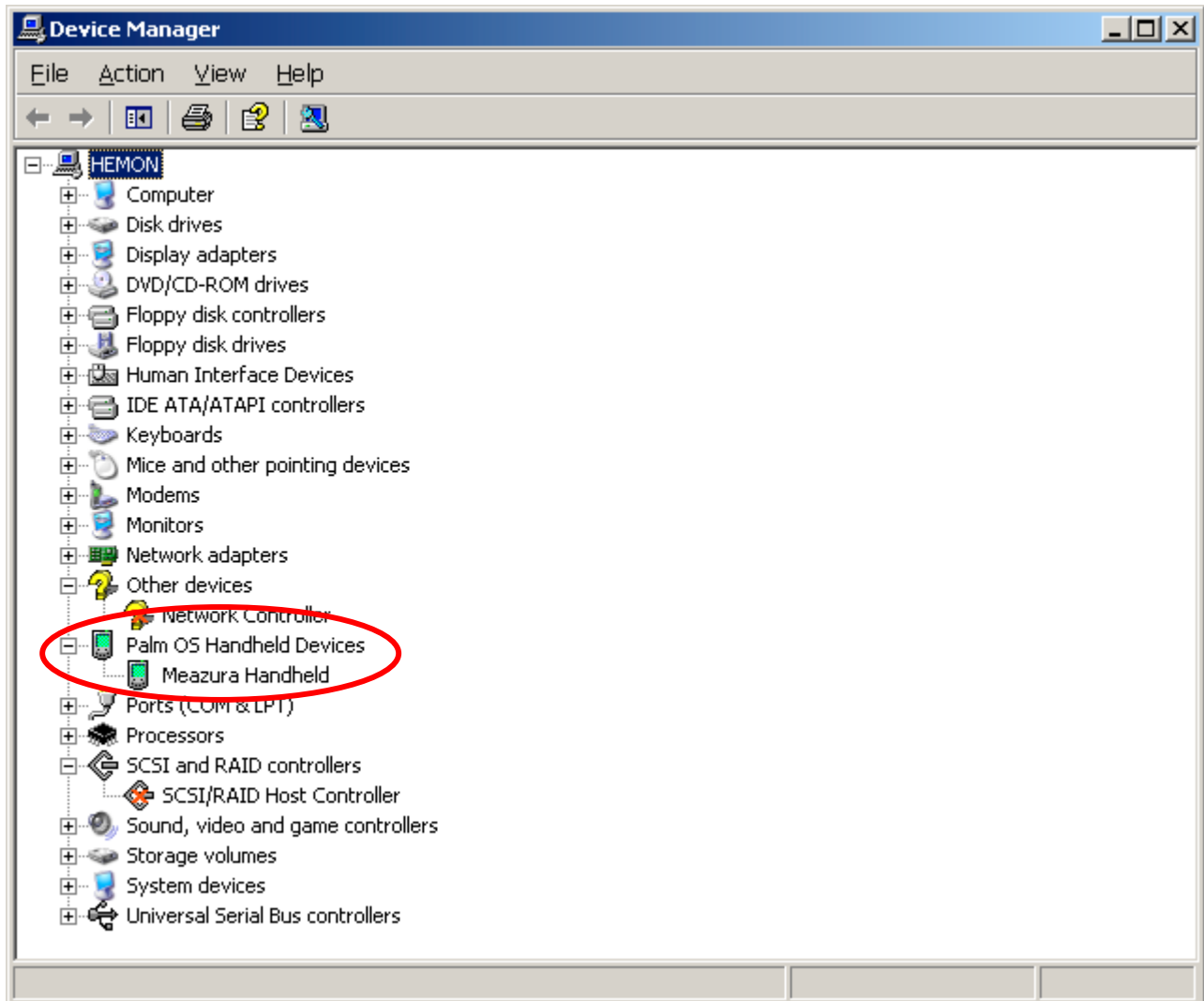


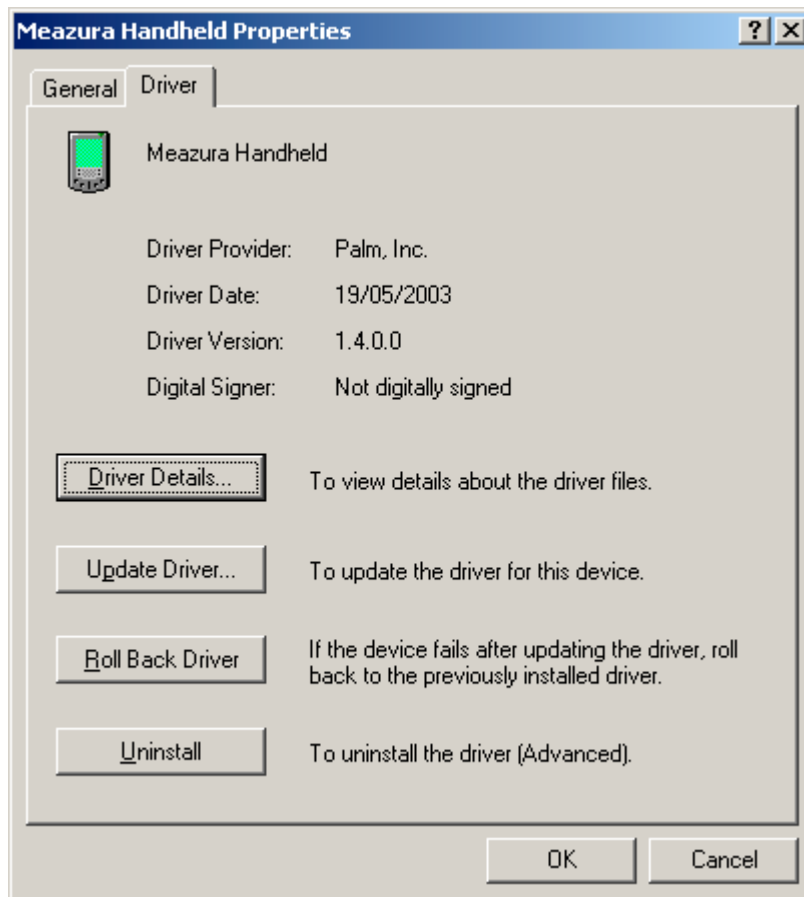
Installing the new USB driver for Window XP and Windows 2000

This document explains changing the USB driver from a previously installed version to a newer version.

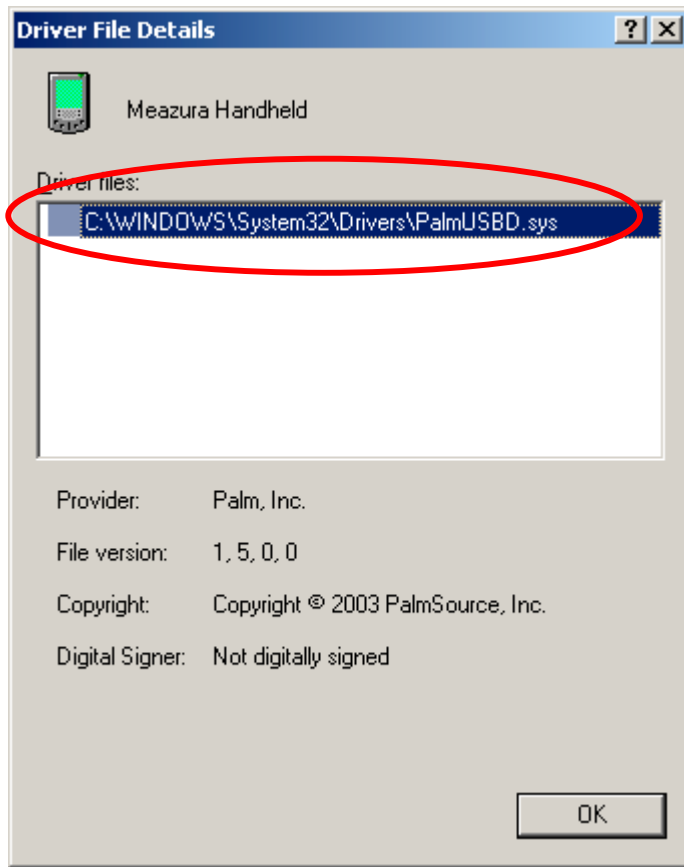
- 1) Connect the Meazura™ to the computer using a USB cable.
- 2) On the PC, go to device manager by following these instructions:-
 - a. Right click on “My Computer”
 - b. Click on “Properties”
 - c. Select the “Hardware” tab in the “System Properties” screen
 - d. Click on the “Device Manager” button.
- 3) Perform a soft reset on the on the Meazura™ and hold down the “Down Arrow” key until you see a blinking square appear in the top left corner of the screen.
(Pushing both the “Power” button and the “Back-light” button at the same time performs a soft reset)
- 4) In the “Device Manager” dialog you should see something like this:



- 5) When you see the “Palm OS Handheld Devices” (highlighted in red), that means that your unit has connected to the computer with its current driver. Now follow these instructions:-
- Right click on “Meazura™ Handheld”
 - Choose “Properties”
 - When in the “Meazura™ Handheld Properties” screen, click on the driver tab as shown below.

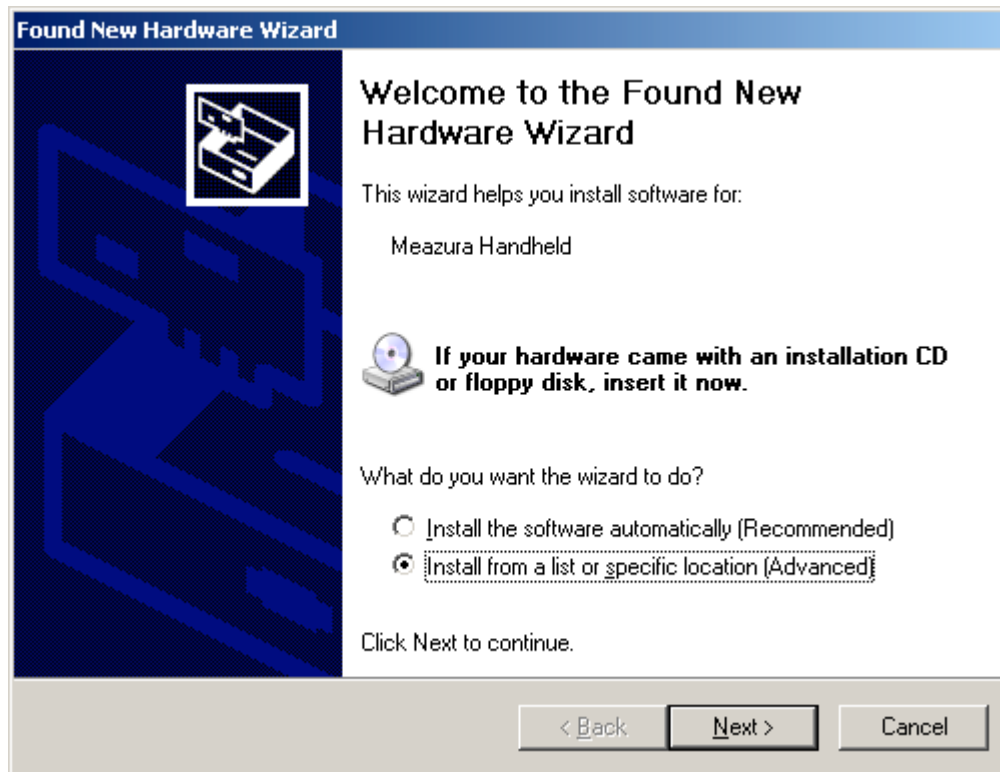


- 6) Click on driver details and note down the path where the driver is located. This is highlighted in red.

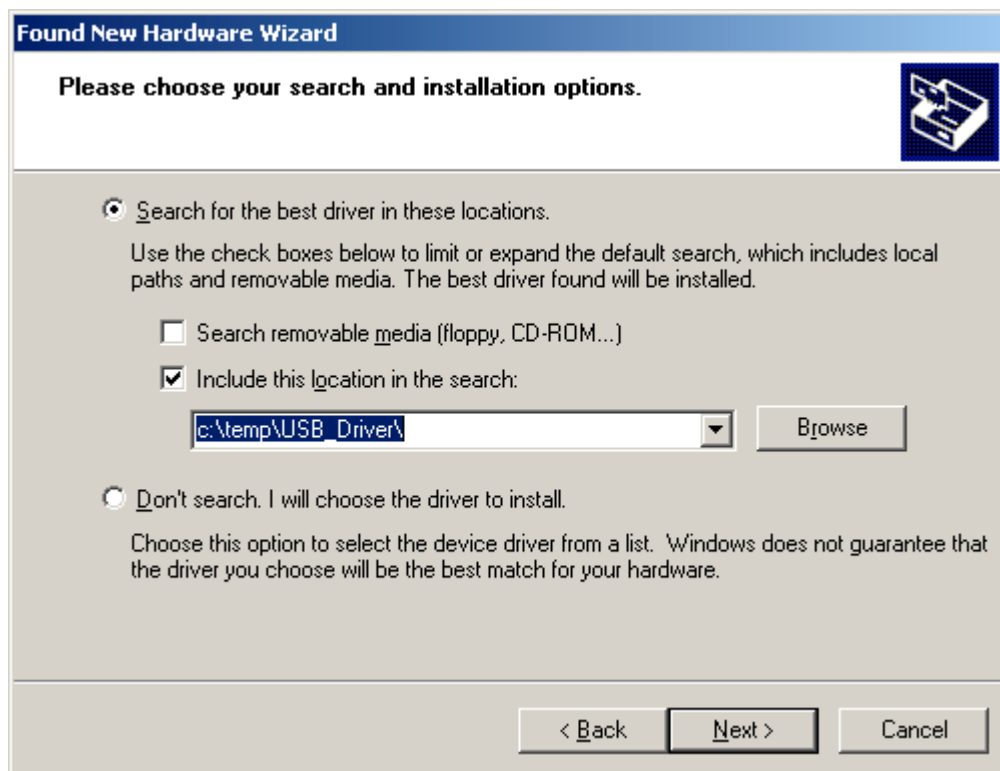


- 7) Click "OK" to return to the previous window.
- 8) a. Click "Uninstall" to uninstall the driver
b. You will be given a confirmation message, click "OK"
c. The "Palm OS Handheld" device should now disappear from the "Device Manager" screen.
- 9) To make sure that Windows does not remember the previous driver, delete the file you noted down in 6) earlier by going to the directory and deleting the file. In this case it was "c:\WINDOWS\System32\Drivers\PalmUSBD.sys".
- 10) At this stage the driver has been removed from your system and you can now install the new driver.
- 11) Unzip the driver files into a known location on your PC.
- 12) Do a soft reset on the Meazura™ and wait for the launcher to appear before initiating a HotSync process using the USB connection.

- 13) Windows will now try to install the new driver. When the “Found New Hardware Wizard” screen comes up, select the “Install from a list or specific location (Advanced)” and click “Next”.



- 14) In the following window, select the options as shown in the picture below. Enter the path where you unzipped the driver to manually or locate it using the “Browse” button. The directory should include the latest version of the “PalmUSBD.inf” and “PalmUSBD.sys” files that you wish to install. Click next to complete the installation of the USB driver.



15) When the driver has been successfully installed, you should get a screen that looks like this.

