

Driver for PL2303 serial to USB

May 2008 rev 1.1

1. For all operating systems

See items 10 and 11 below for tips on using the Serial-to-USB converter.

2. Windows Vista Program Installer Guide

Security features in VISTA prevent the direct installation of this driver, so you must follow these instructions. If the software is distributed on a CD, you will have to make a copy of the driver installation file (see step 4) on your local hard drive. You may also need to do this if the software came on a USB FLASH drive.

VISTA will also issue warnings that the software and drivers are not certified. In our testing, the drivers operate under VISTA. Dismiss these warnings.

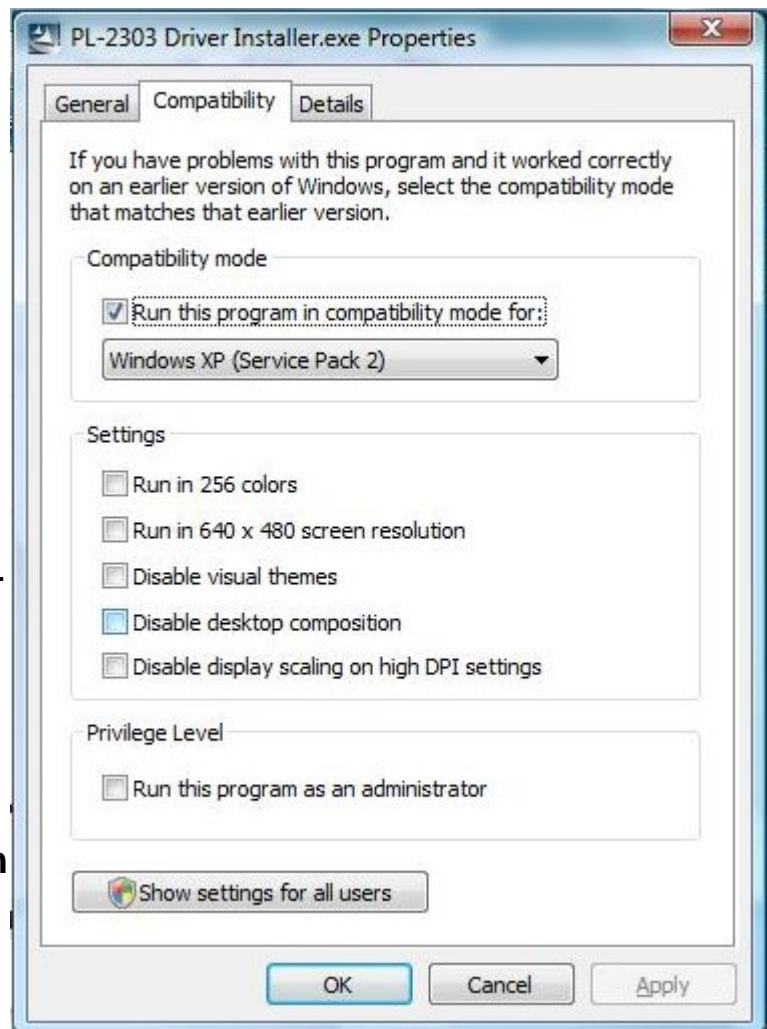
1. Find the USB or CD drive under the Computer Icon in Vista and right-click on the icon – choose “**Open**” or “**Explore**”. Do not choose “**Autorun**”.



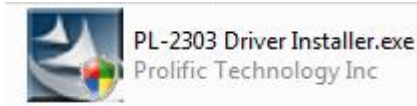
2. Navigate to the folder “**Drivers/PL2303**”
3. Right click on “**PL-2303 Driver Installer.exe**” (note that if the software came on a CD – and possibly if it came on a USB memory stick – you will have to make a copy of this file on your computer's hard drive before proceeding).



4. Select “**Properties**”.
5. Select “**Compatibility**” Tab.
6. Check the “**Run this program in compatibility mode for:**”, Select “**Windows XP Service Pack 2**”.



7. Double click the “**PL-2303 Driver Installer.exe**”.

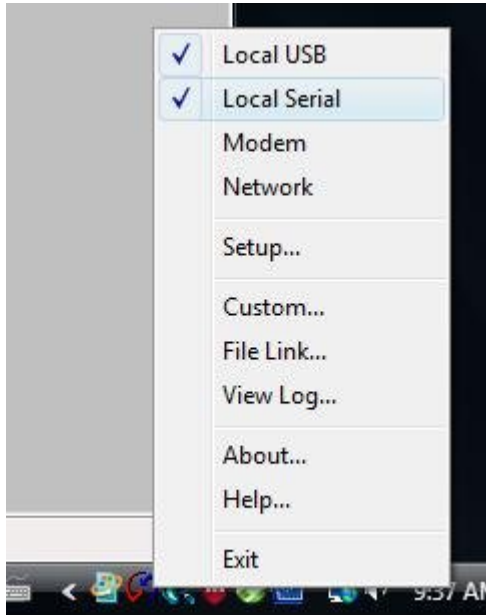


8. Select “**Install**”, then “**Next**”.

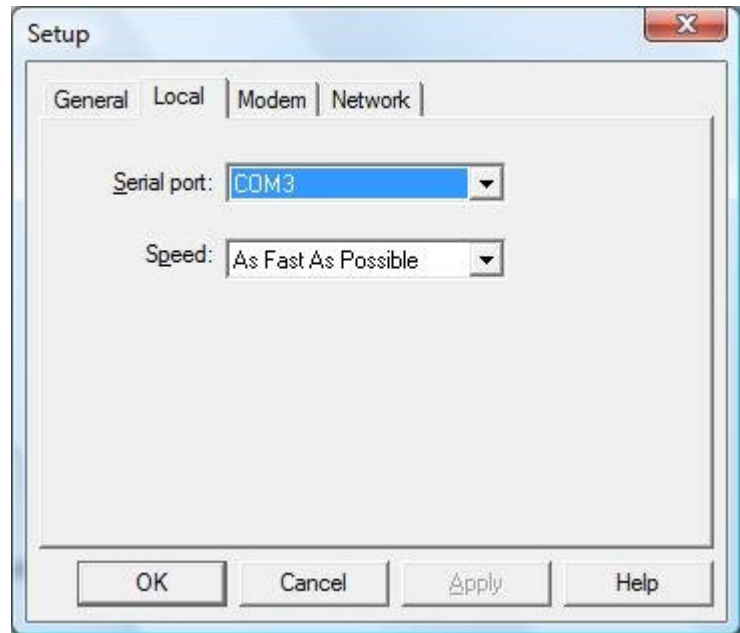
9. Once the install has finished, select “**Yes, I want to restart my computer, now**”, and click on “**Finish**”.



10. Once the computer restarts, and after you have installed the HotSync software (option #1 of the install program), right-click the Hotsync icon on the bottom right toolbar.

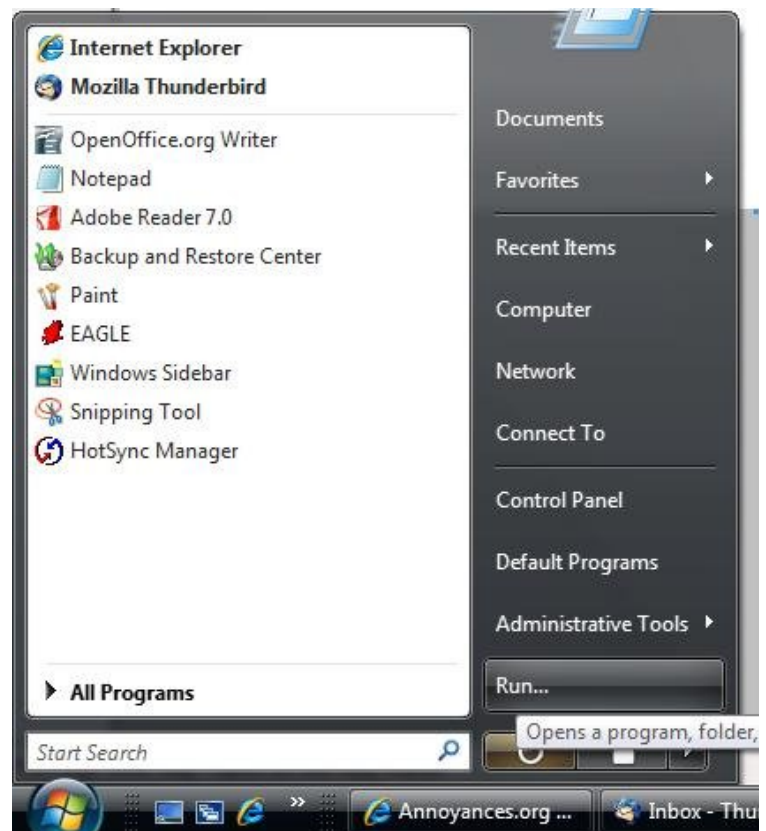


11. Make sure that “**Local Serial**” is checked (see at right). You can leave “**Local USB**” checked.

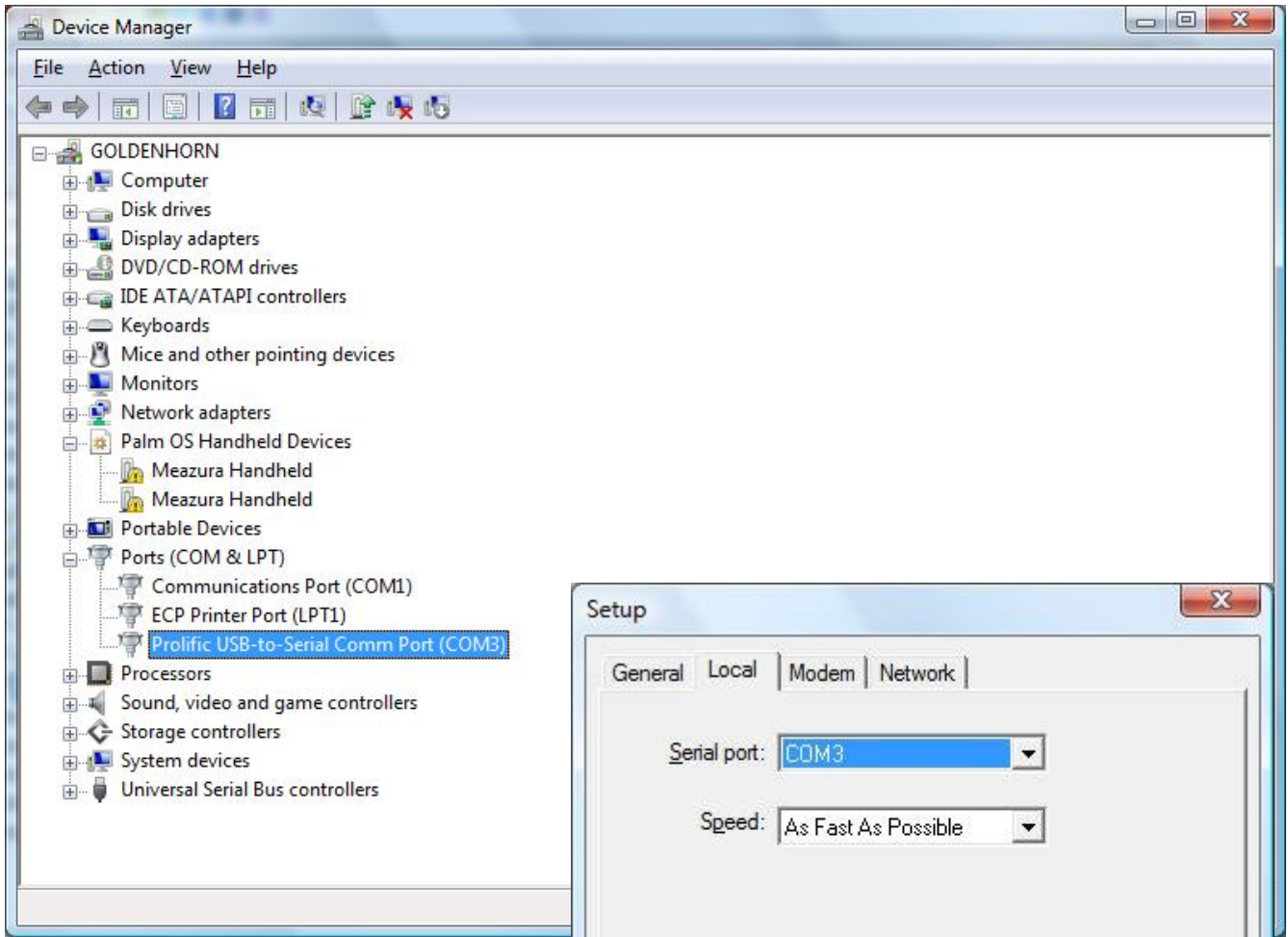
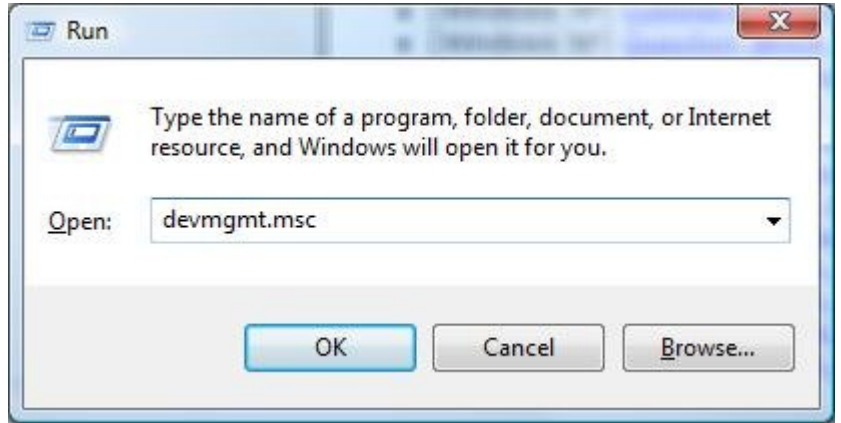


12. Right-click again and select “**Setup**”. On the “**Local**” tab, make sure that the correct serial port is selected. The PL2303 Serial-USB converter will be assigned a different COM port depending on which USB port it is plugged into.

13. For step 12, if you do not know the serial port number assigned to the serial-to-USB cable, you need to run the “**Device Manager**” program. In the “**START**” menu, choose “**Run**” (you can also go to the computer’s “**Control Panel**” and find the Device Manager under Computer Management, or System)



- 14. If using the “Run” method, type in “devmgmt.msc” and click on “OK”.
- 15. Once the device manager window opens, expand the “Ports (COM&LPT)” section by clicking on the “+” beside “Ports”. You should see the PL2303 (Prolific USB-to-Serial) adapter listed along with its assigned COM port number (COM3 in this example). The adapter needs to be plugged into the computer for this to work.



- 16. With the COM port noted, right-click again on the HotSync icon and select “Setup”. Then, on the “Local” tab, select the appropriate COM ports (again, COM3 in this example).

17. TROUBLESHOOTING: The HotSync program misbehaves somewhat in that when it is running, and “**Local Serial**” is selected, it interferes with the proper operation of ALL serial ports on the computer. Therefore, if you have other programs that use serial ports on your computer, you will need to terminate the HotSync Manager in order to run this software. You can do this by right-clicking on the HotSync icon and choosing “**Exit**”. The HotSync Manager can be restarted from the Program Menu under the “**PalmOne**” listing.