

# Meazura using USB cable Driver installation guide for VISTA and XP

May 2008 rev 1.0

Use this guide to install the driver for the Meazura PDA's USB cable. If you are connecting the Meazura to the computer using a serial cable and USB-serial converter, do NOT use this guide.

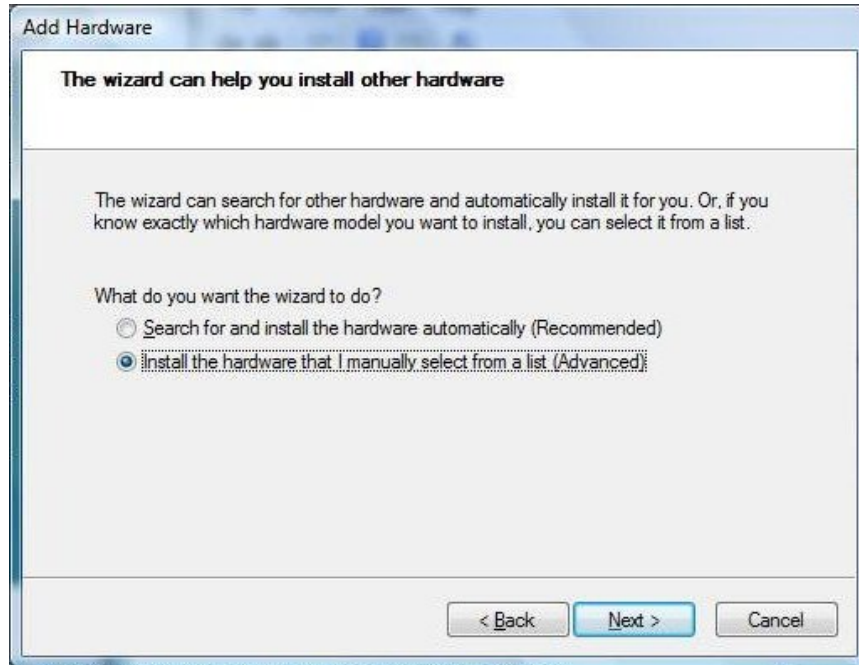
For both XP and VISTA, you should follow these instructions BEFORE connecting the Meazura to your computer. If you have already connected the Meazura and are looking at a screen similar to step 5 for VISTA or step 5 for XP, you may proceed from that point and follow the general idea for the installation.

## 1. For VISTA

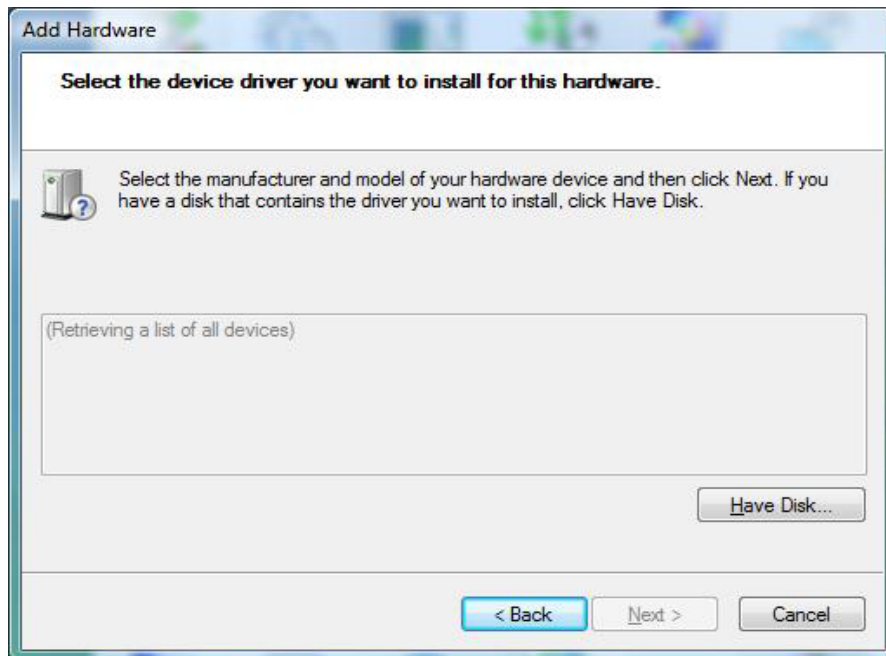
1. Select the “**Control Panel**” from the computer’s start menu.
2. Double click “**Add Hardware**” Icon. You may get a “Windows User Permission Screen” popping up (press “**Continue**” to dismiss this window).
3. When the Add Hardware screen appears, click “**Next**”.



- From the next screen, choose “**Install the Hardware that I manually select from a list**”, and click on “**Next**”

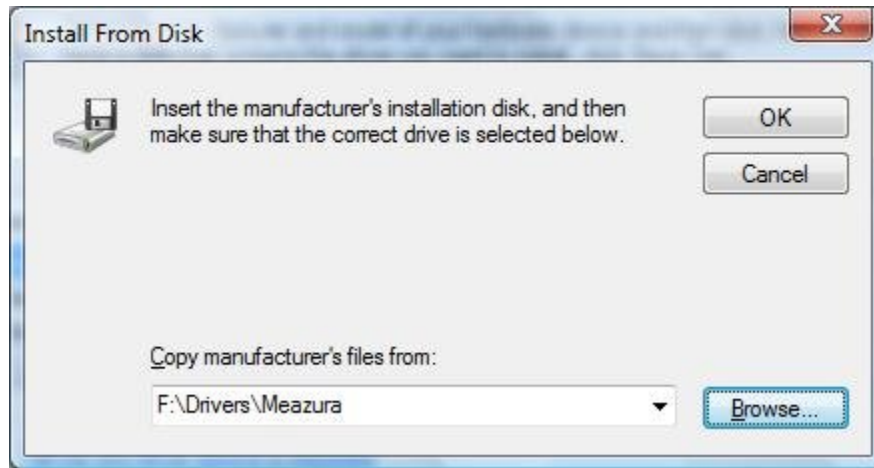


- Choose “**Show all devices**” from the top of the list.
- Click “**Have Disk**” on the next screen.

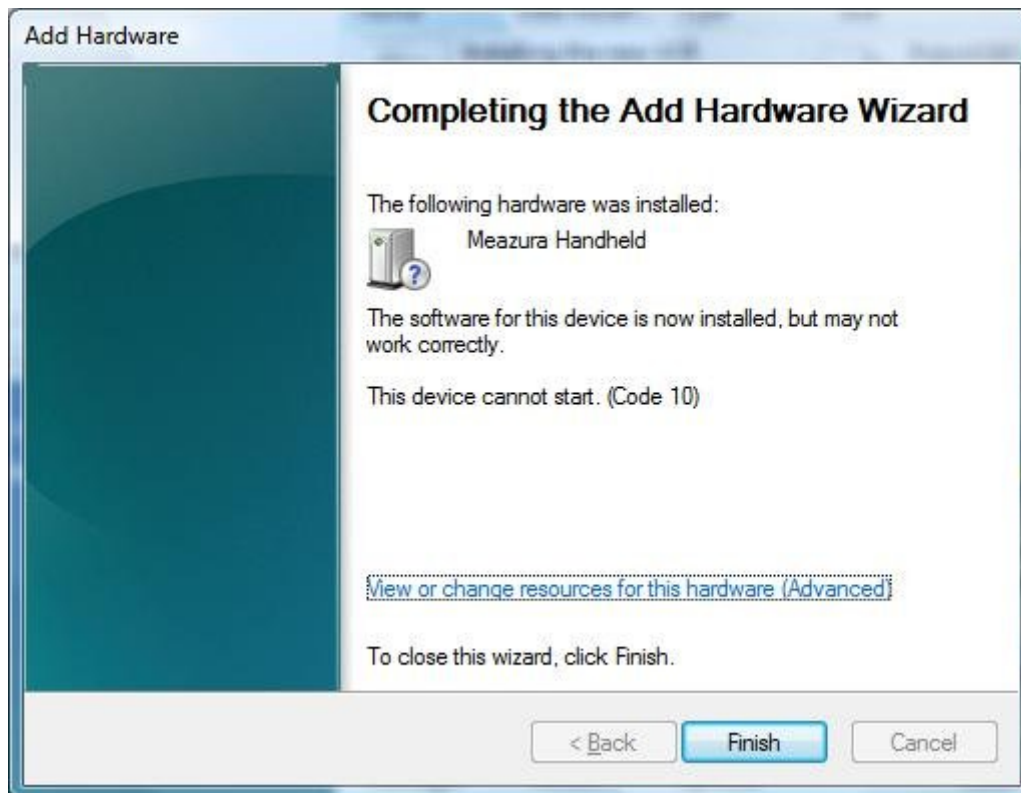


- Click “**Browse**” on the next screen and choose the directory containing the

Meazura drivers (“Drivers\Meazura”) on the CD, USB stick, or hard drive.

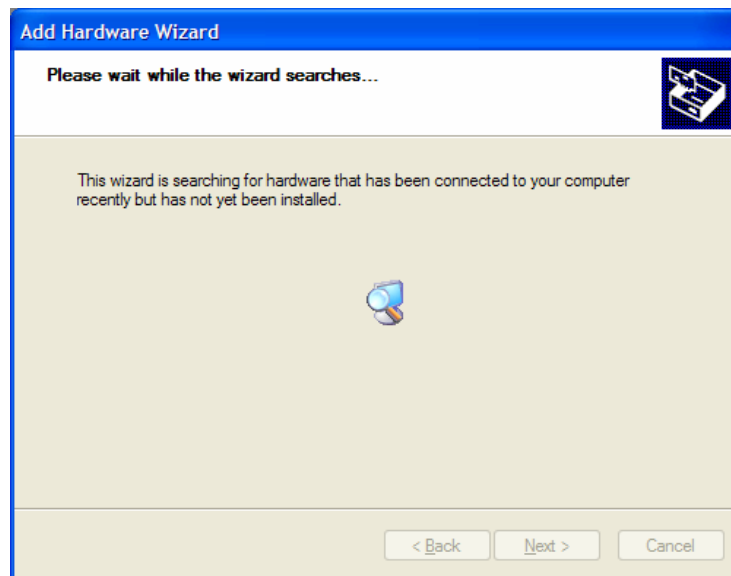


8. Select file “**PalmUSBD.inf**”. Click “**Open**”, then “**OK**”.
9. The driver will now install, but will fail as the Meazura is not attached. Click “**Finish**” to complete the installation.
10. Restart the computer, with Meazura PDA attached to activate the Meazura driver in Vista (the driver will not recognize the Meazura until you request a HotSync).

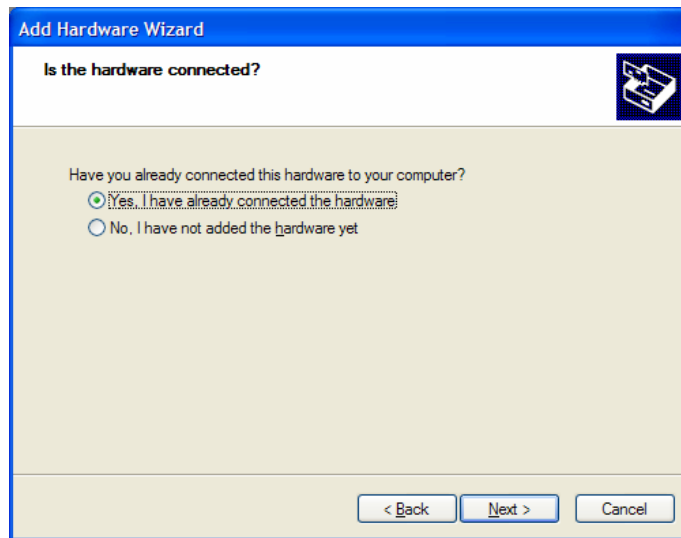


## 2. For XP

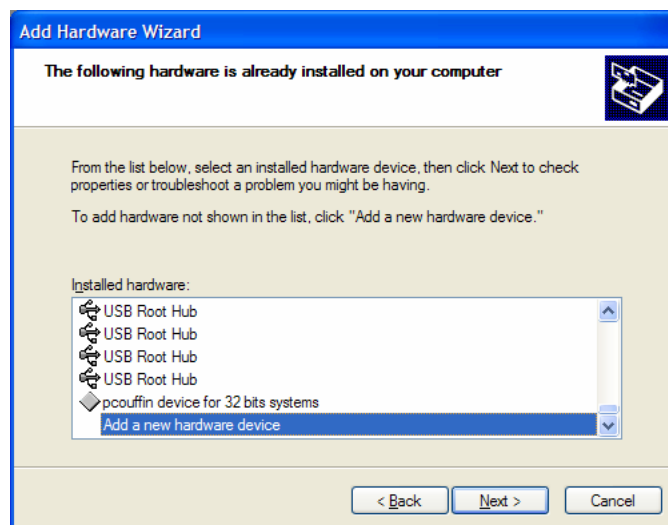
1. Select the “**Control Panel**” from the start menu.
2. Double click the “**Add Hardware**” Icon.
3. When you click “**Next**”, XP will search for new hardware, but will probably find nothing.



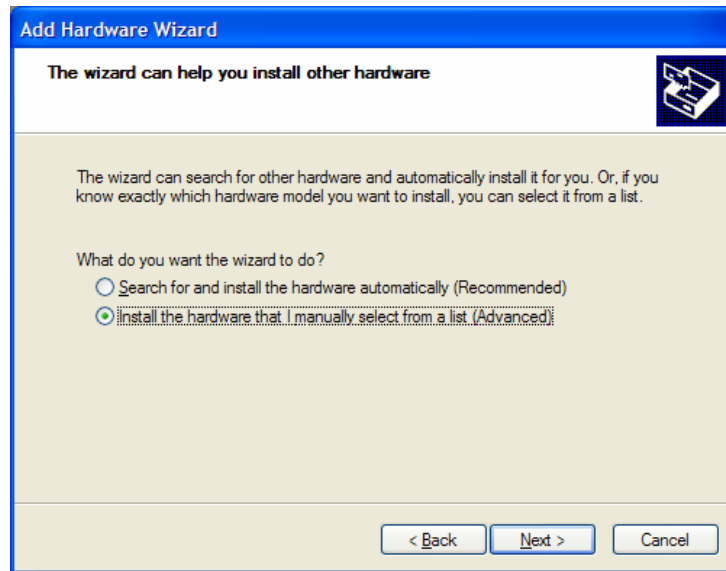
4. Select “**Yes, I have already connected the hardware**” (even though you have not), then “**Next**”.



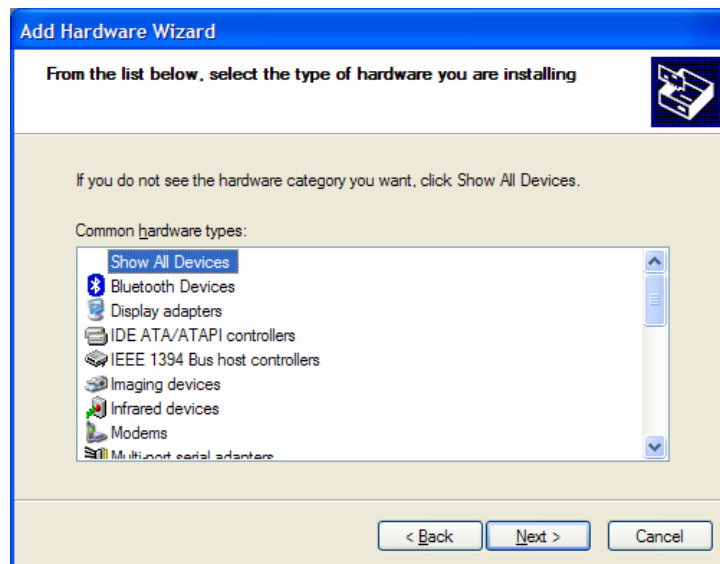
5. From the next screen, select “**Add a new hardware device**” at the bottom of the list of possible devices.



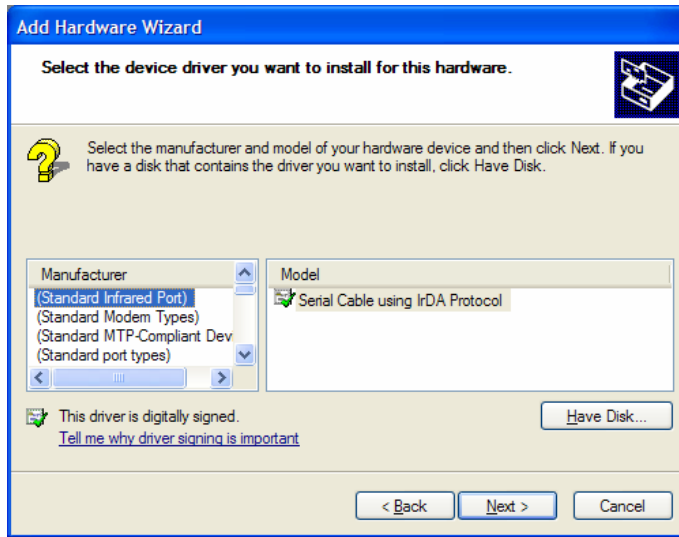
6. Select “**Install the hardware that I manually select from a list**”, then “**Next**”.



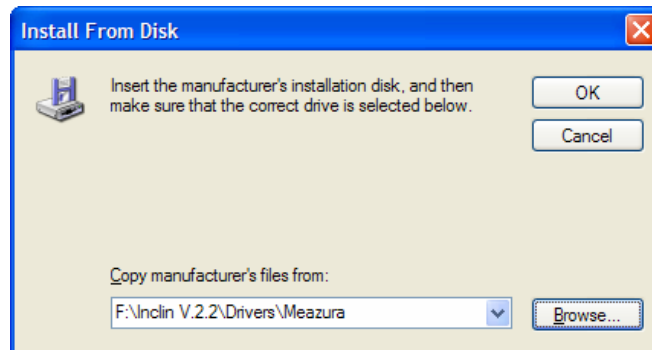
7. Now, select “**Show All Devices**” from the next screen, then “**Next**”.



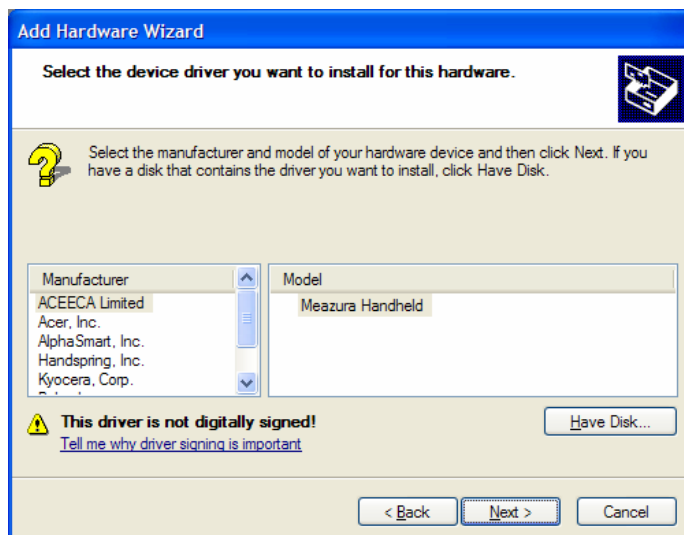
8. After a delay, you will see a screen that lists all known devices on your computer – click on **“Have Disk”**, and **“Browse”**.



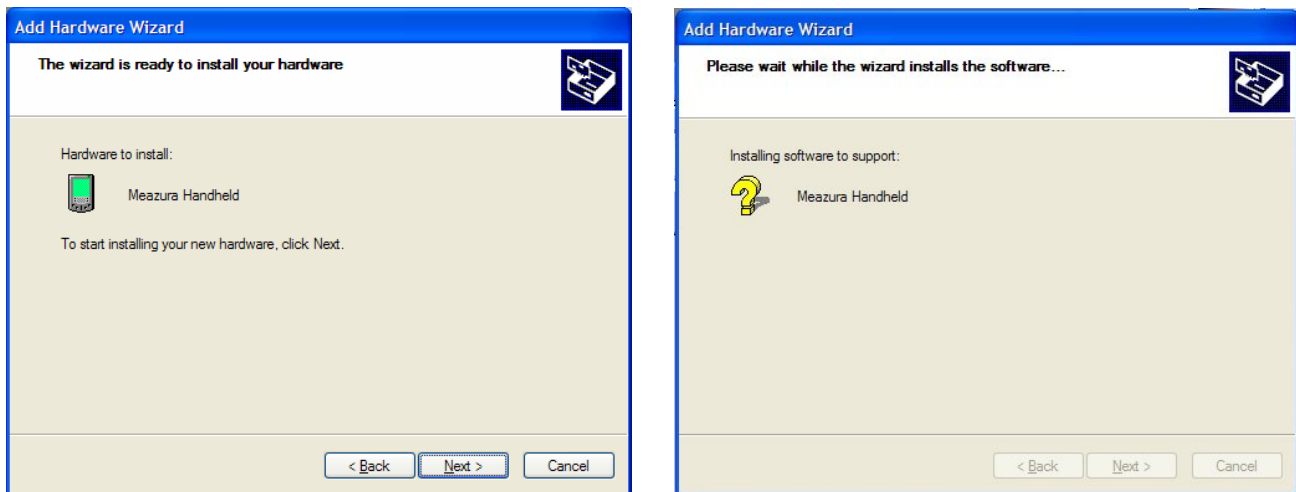
9. Select the file called **“PalmUSBD.inf”** located in the directory **“Drivers\Meazura”** on the CD, USB stick, or hard drive. Click on **“Open”**, then **“OK”**.



10. The **“Model”** window should now show **“Meazura Handheld”** – click **“Next”**.



11. The new hardware wizard is now ready to install the driver. Click **“Next”**.



12. As with the VISTA installation, the driver install will fail since there is no Meazura device attached. Click **“Finish”**. The driver will operate once a Meazura is attached and begins a HotSync process.

