

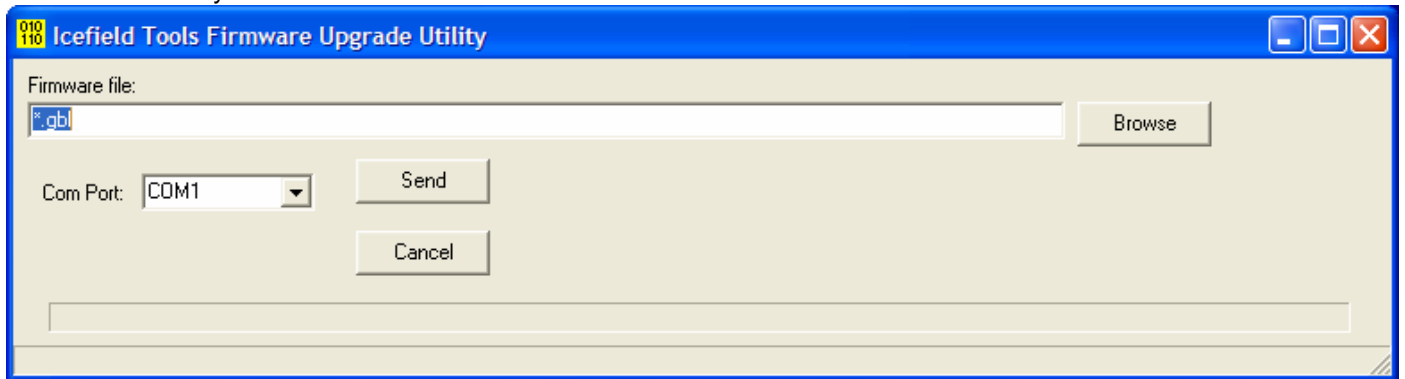
Field-upgrade of Gyro Shot® firmware

1 Which firmware revision?

These instructions apply to Gyro Shot® instruments with firmware version 3.3 or later. Instruments with firmware version 3.2 can be field-upgraded **only once** – any further upgrades will require a return to the factory. Firmware versions pre-3.2 cannot be field-upgraded and must be returned to the factory.

2 Instructions

- Download the latest firmware file with extension “GBL” from the support section of the www.icefieldtools.com web site. Save this file to your computer and note the location of the file.
- Connect the Gyro Shot® instrument to your computer. Make sure that it has fresh batteries and is connected to a known serial port (e.g., COM1).
- Run the program called “IceBootloader.exe” located in the installation directory for the Gyro Shot® software.



- Use the “Browse” button to select the “GBL” file that you downloaded and select the appropriate COM port from the drop-down menu.
- Press the “Send” button. Firmware upgrade will take approximately 10 minutes.

3 Troubleshooting

If the upgrade does not succeed:

- Ensure that you are using the correct serial port (you should hear the instrument beeping)
- Ensure that the instrument is not running a survey
- Remove the batteries from the instrument, wait a few minutes, then reinstall the batteries and try again